

# TEXTILE REPORT

## AUTUMN 21.22

colour, fabric & styling directions

79,00 €



mode...information

TEXTILE  
REPORT

Autumn 21.22

N° 20/3

## key items

# Leather Pants

baggy trousers  
cropped & turn-ups  
high waist  
soft nappa



## colours

### Dazzling Cocktail

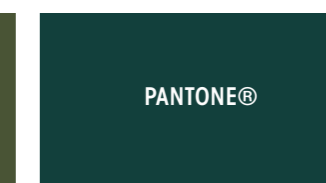
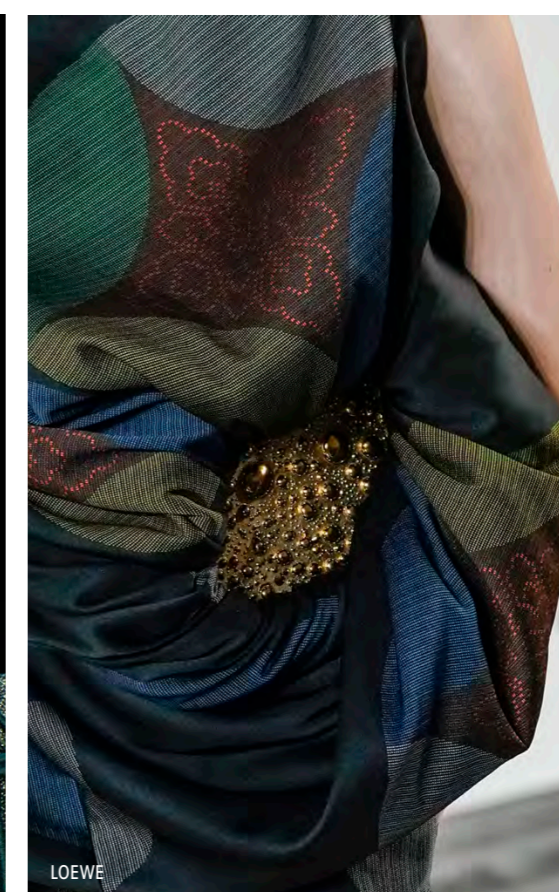
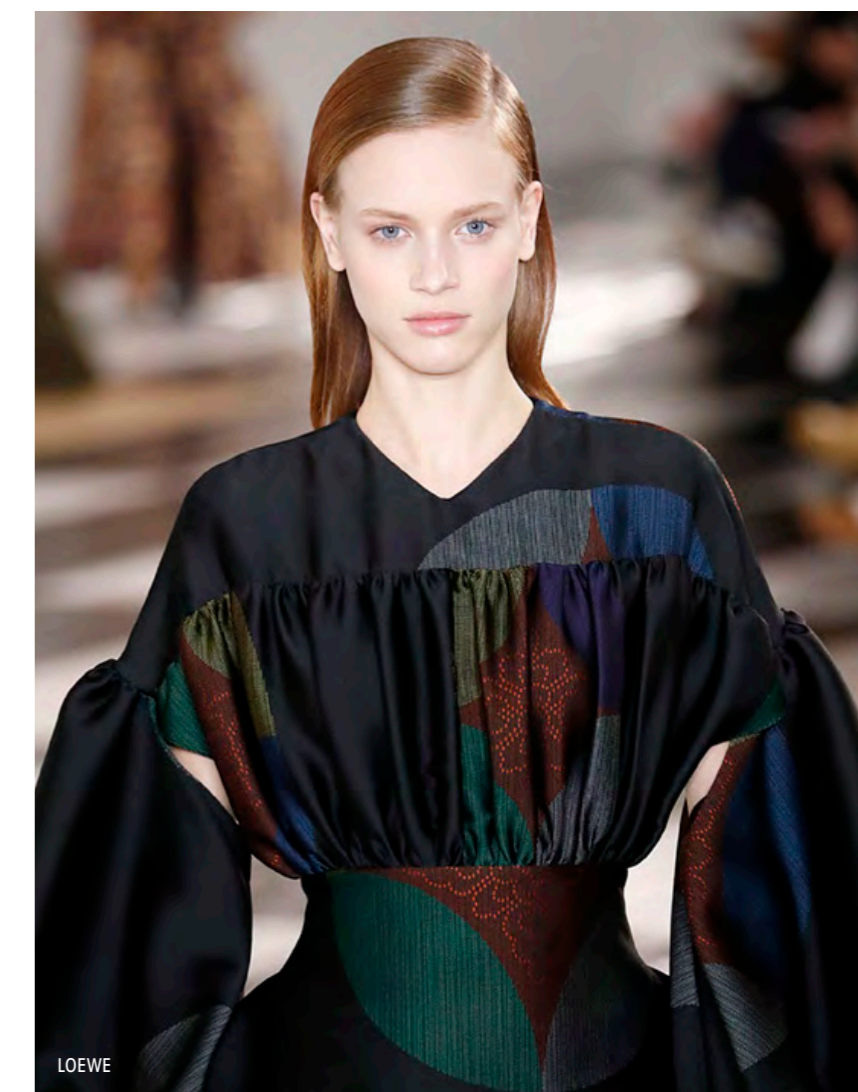
gold  
phosphorus  
winter turquoise  
teal  
porcelain blue



## colours

### Day & Night

copper  
gold  
dark olive  
evergreen  
classic blue



# prints

## Retro Geo

allover pattern  
70s wallpaper  
graphic  
tangram pattern  
stripes & diamonds



## key shapes

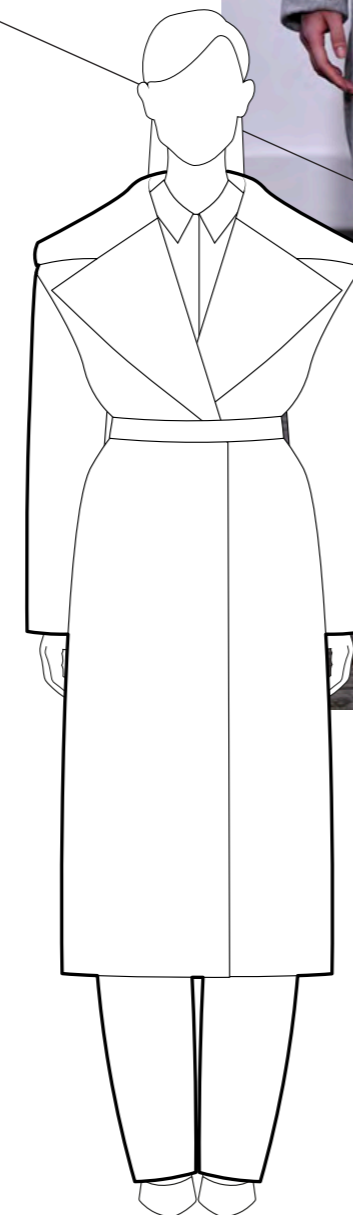


oversized  
contrasting sleeves  
extreme fake lapel  
taglio vivo

casual fit  
girded  
accentuated lapel  
midi-length



A-Line  
Coat



Blazer  
Coat

## key shapes



raglan sleeves  
checked  
girded  
total look

removable cape  
girded  
tailored  
flap pockets



Elevated  
Trench

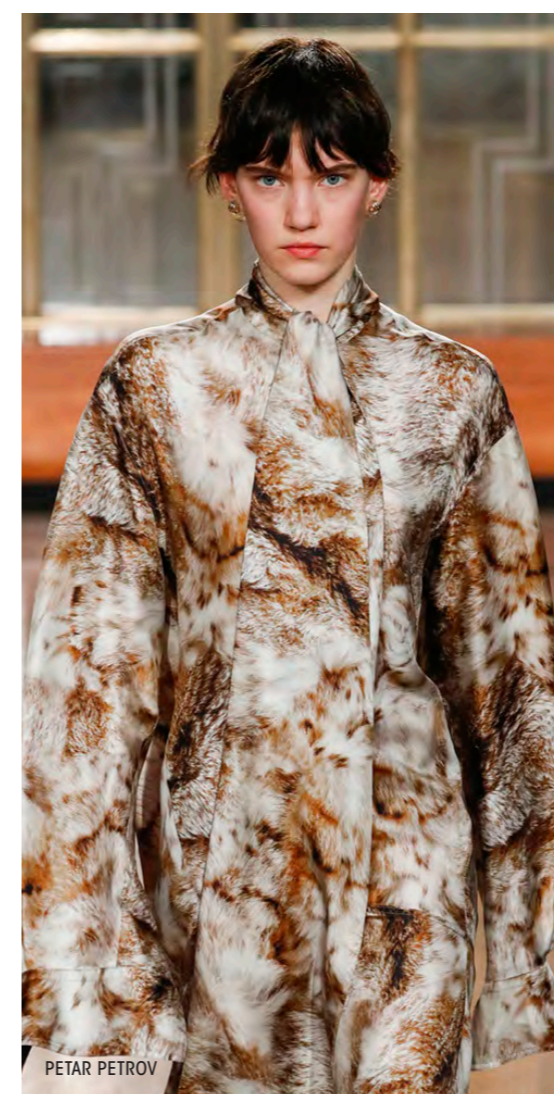
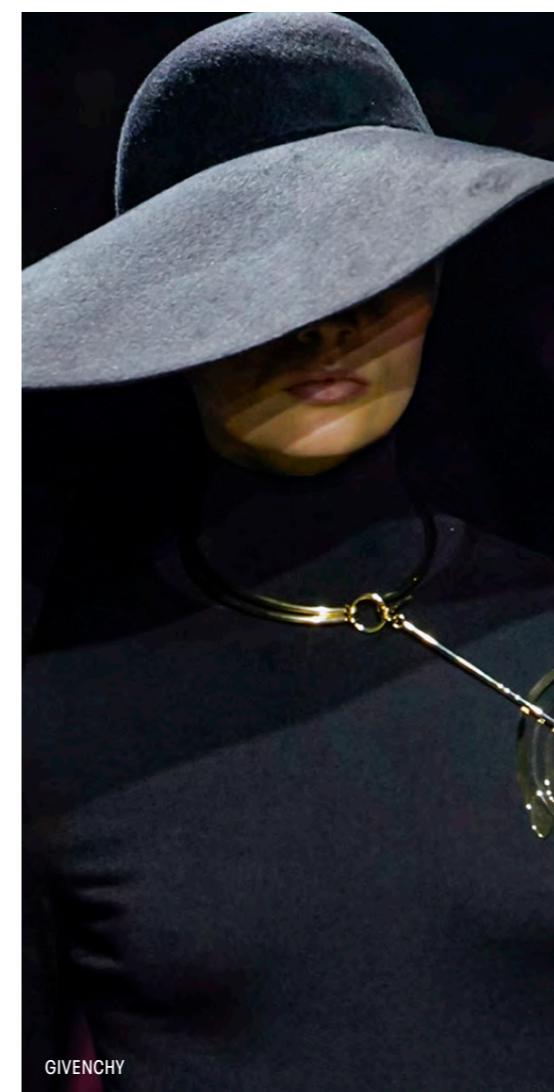
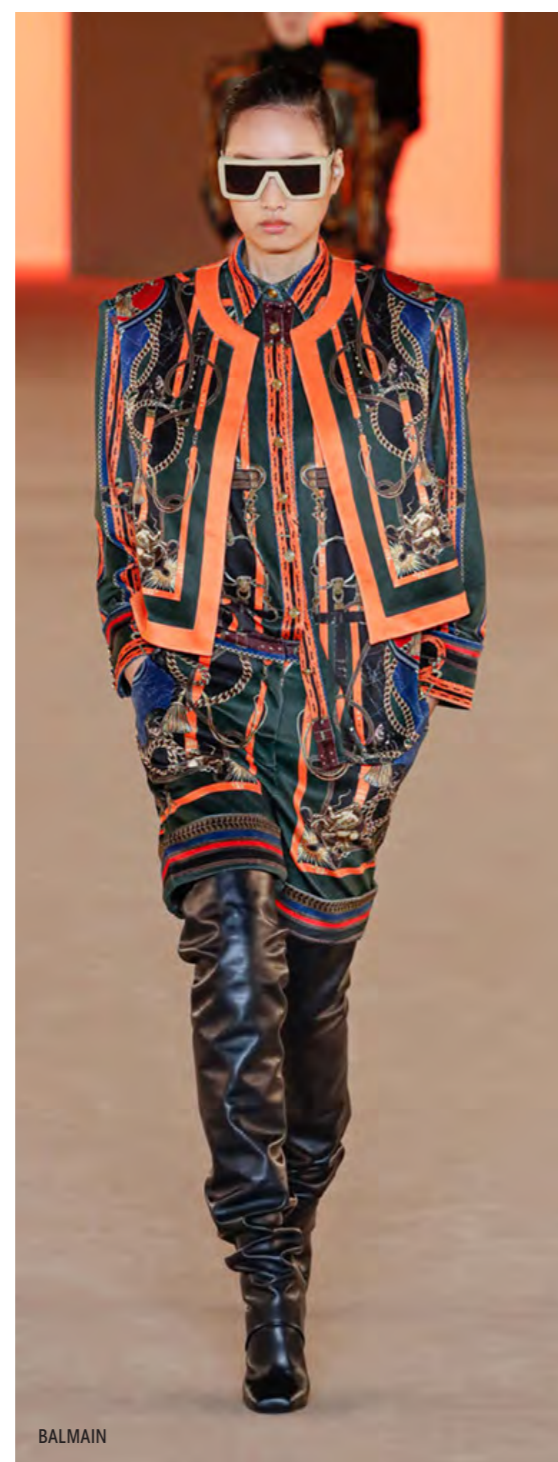


Pelerine  
Coat

# moods

## West End

The trend of elegance and quality continues this season. Luxury seems to be an increasingly important means of expression in our time. Accordingly, we find a lot of looks that range from understatement elegance to ladylike couture. Suits and costumes as well as opulent outerwear are the most important product groups and soft nappa leather, high-quality wool and printed silk the must-have materials. A broad range of distinguished accessories from elegant pumps, soft nappa boots to bijoux-decorated shoes and carryalls as well as gloves, scarves and costume jewelry are a must in this winter!



## moods

# Daywear Couture

short pile fur  
bobbinet lace  
printed velvet  
satin & crêpe georgette  
croc & reptile



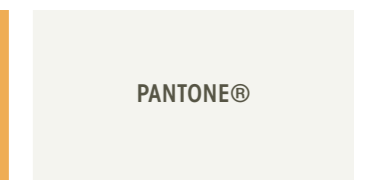
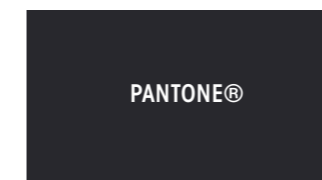
## fabrics



## pattern



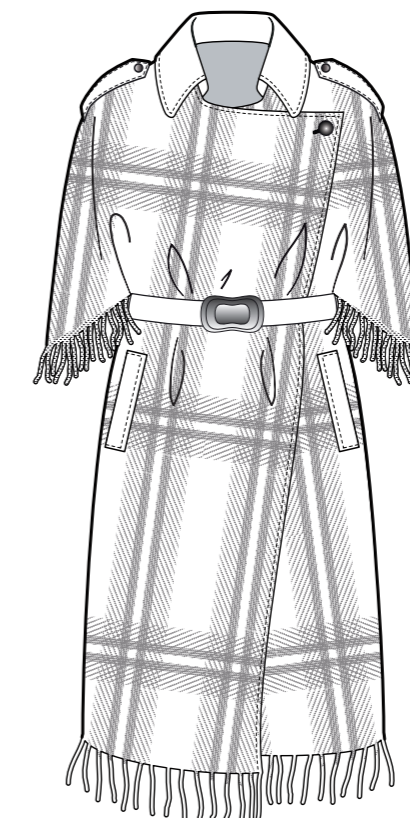
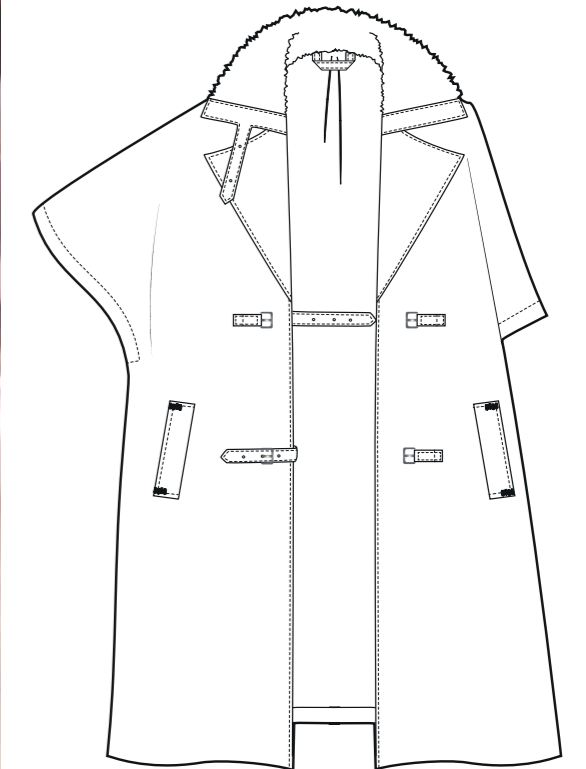
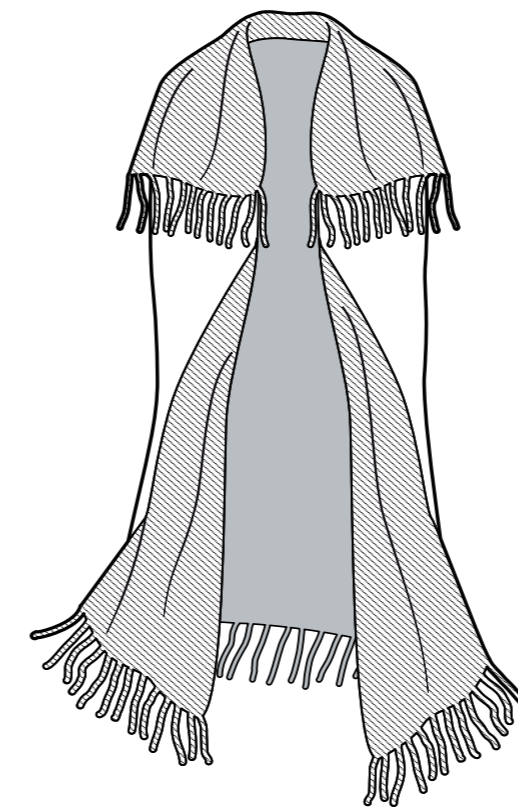
## colours



## products

### New Plaid

woollen blankets  
nappa piping  
diamonds & block stripes  
fringes  
asymmetric cut



# PANTONE®

Color. Life. Style.

Fashion, Home + Interiors



Pantone® and other Pantone trademarks are the property of Pantone LLC. Pantone LLC is a wholly owned subsidiary of X-Rite, Incorporated. © Pantone LLC, 2020. All rights reserved.

## Delicious Greens?

315 essential new choices from the only color authority that matters. Presented in a fresh color arrangement that streamlines digital and physical workflows so you can meet all your daily design requirements.



Please visit [www.modeinfo.com](http://www.modeinfo.com) or contact your local mode...information partner  
mode...information Group - your partners for trend communication

## FOR MORE INFORMATION:

[WWW.MODEINFO.COM](http://WWW.MODEINFO.COM)

MODE... INFORMATION  
PILGERNSTRASSE 20  
51491 OVERATH  
GERMANY

PHONE +49 2206 6007-0  
E-MAIL [SERVICE@MODEINFO.COM](mailto:SERVICE@MODEINFO.COM)